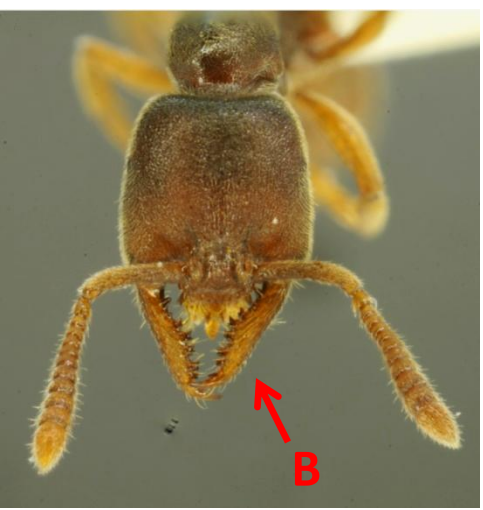


Stigmatomma pallipes (Vampire Ant)



ID Synopsis: (A) Constricted gaster.
(B) Thin mandibles with lots of teeth.

Similar species: *Ponera pennsylvanica* also has long gaster with constriction, but lacks the distinctive mandibles of *Stigmatomma pallipes*.

Habitat: Forests.

Abundance: Somewhat common.

Etc: Makes small colonies. Preys on centipedes, beetle larvae, and caterpillars.

