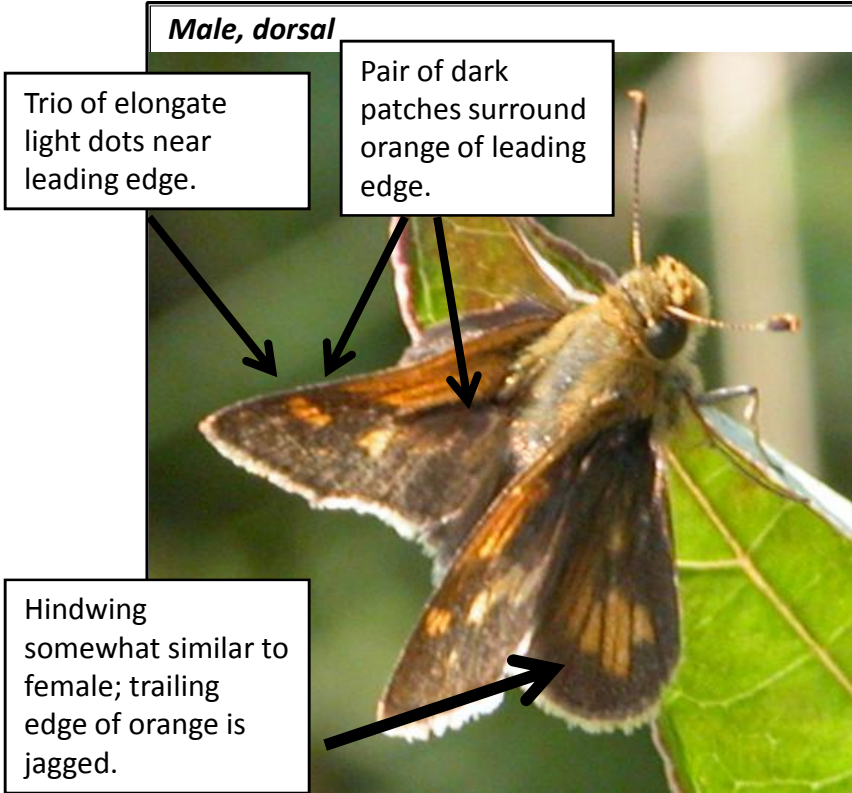
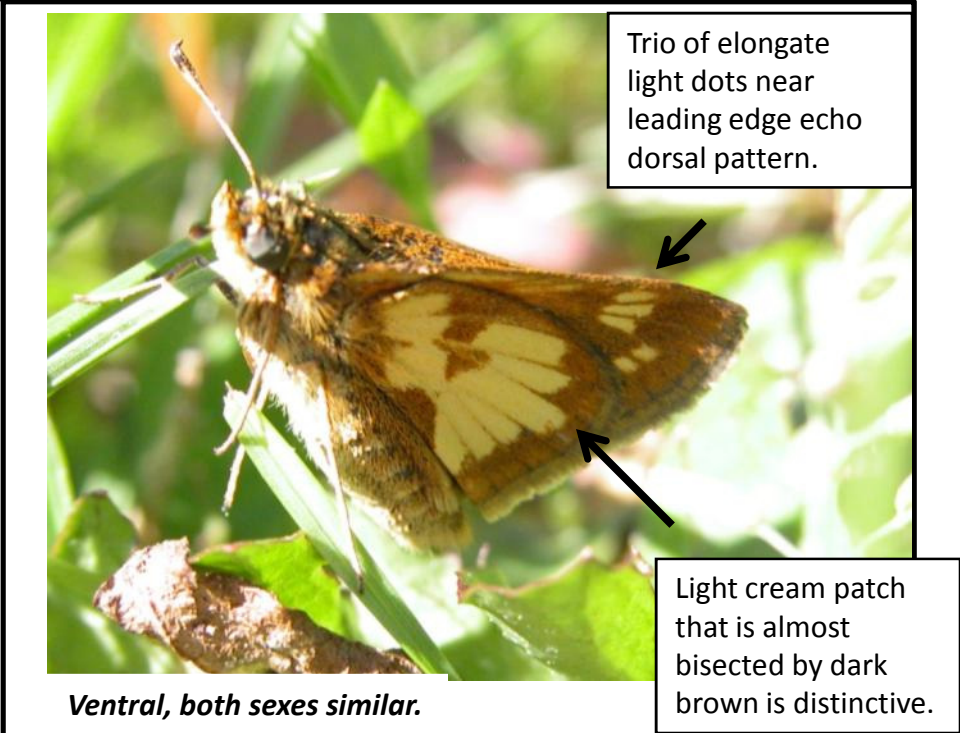
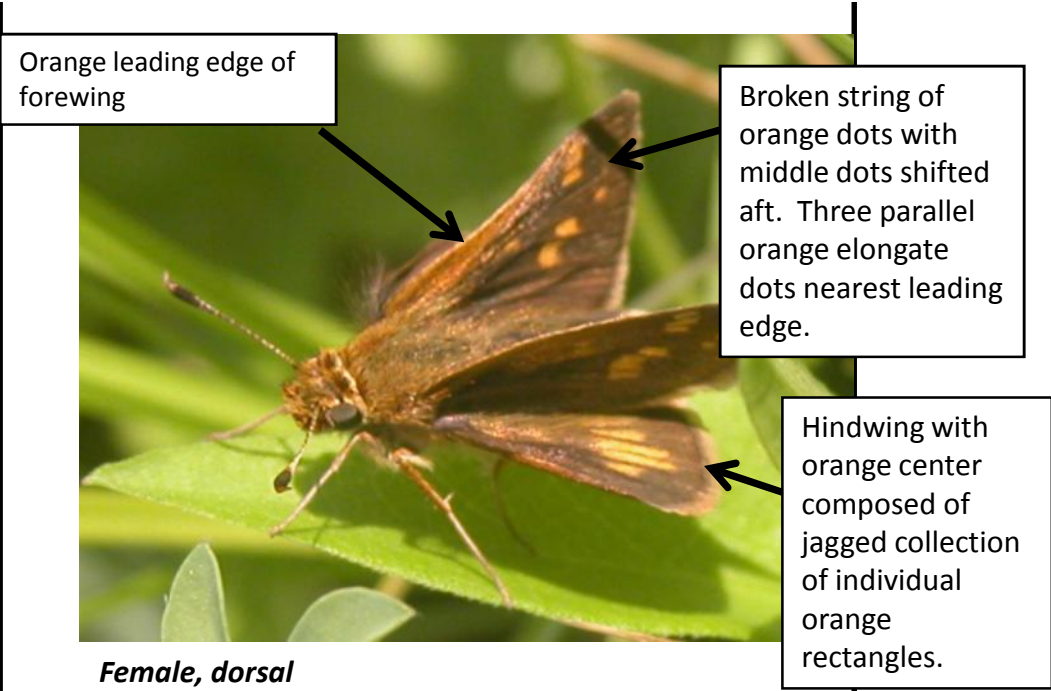
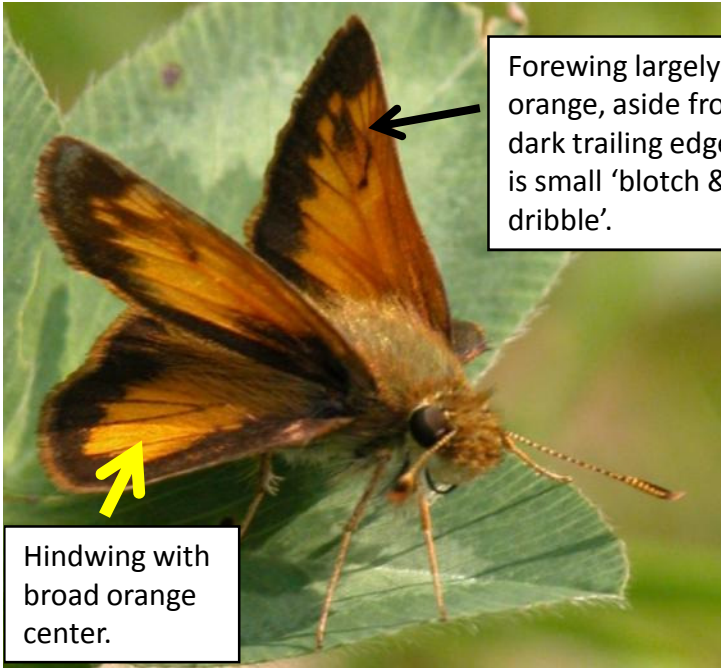


# A Guide to some Columbia County Skippers. KYPP. 2009

## Peck's Skipper *Polites peckius*

Very common skipper of our fields, flies most of the summer. Most easily confused with the Hobomok Skipper.

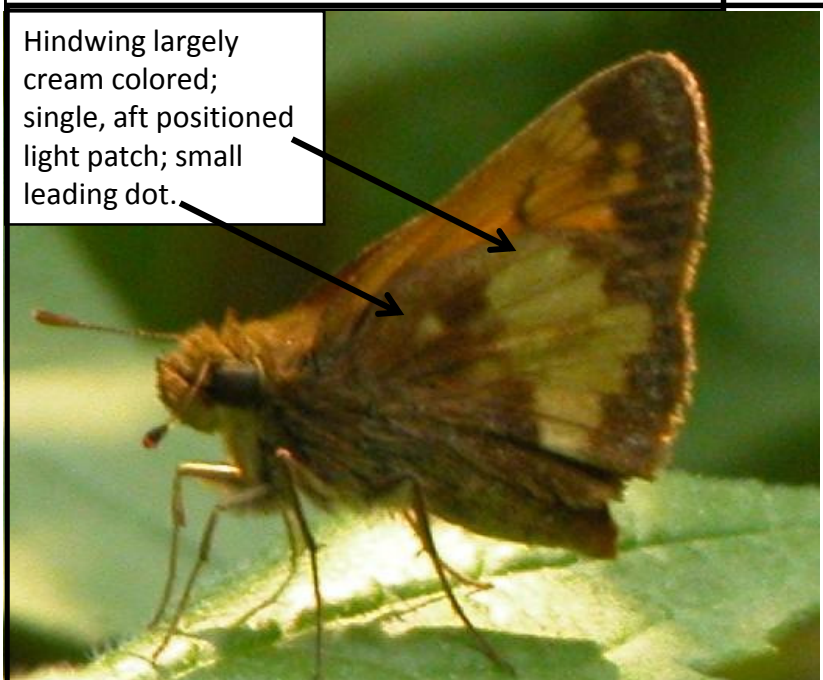




Forewing largely orange, aside from dark trailing edge, there is small 'blotch & dribble'.

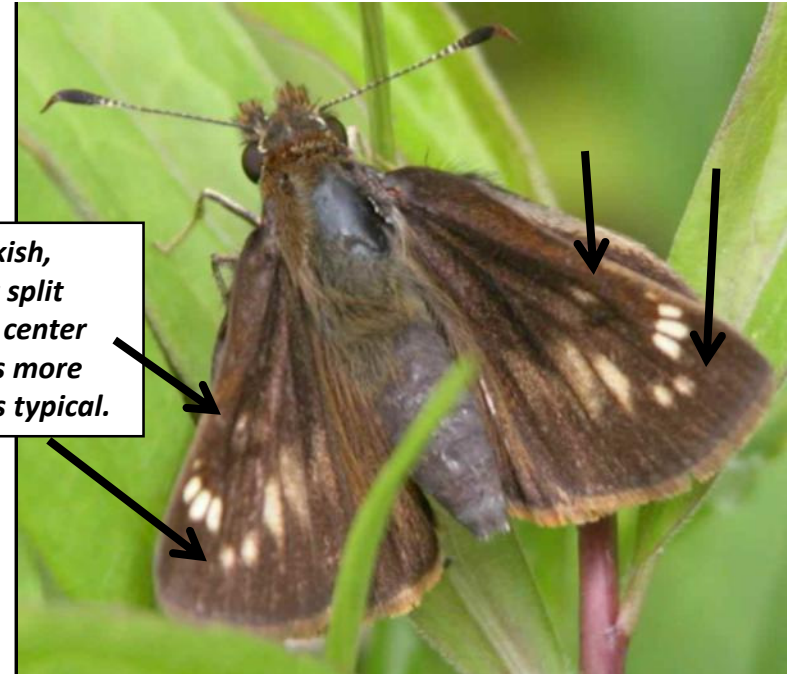
Hindwing with broad orange center.

**Male, dorsal**



Hindwing largely cream colored; single, aft positioned light patch; small leading dot.

**Ventral, both sexes similar.**

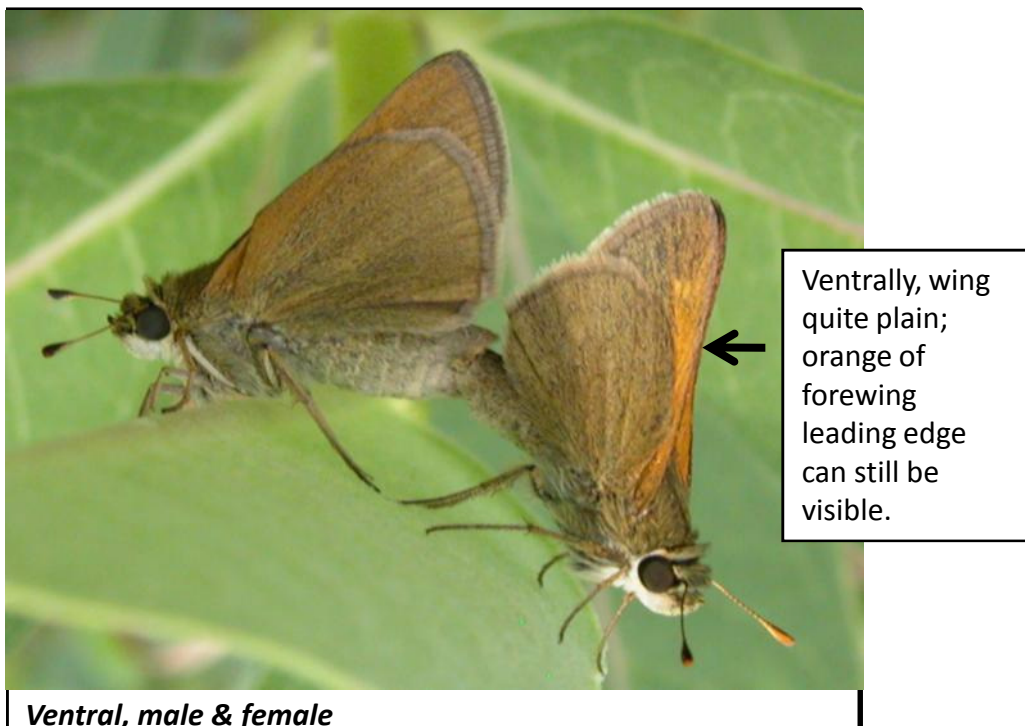
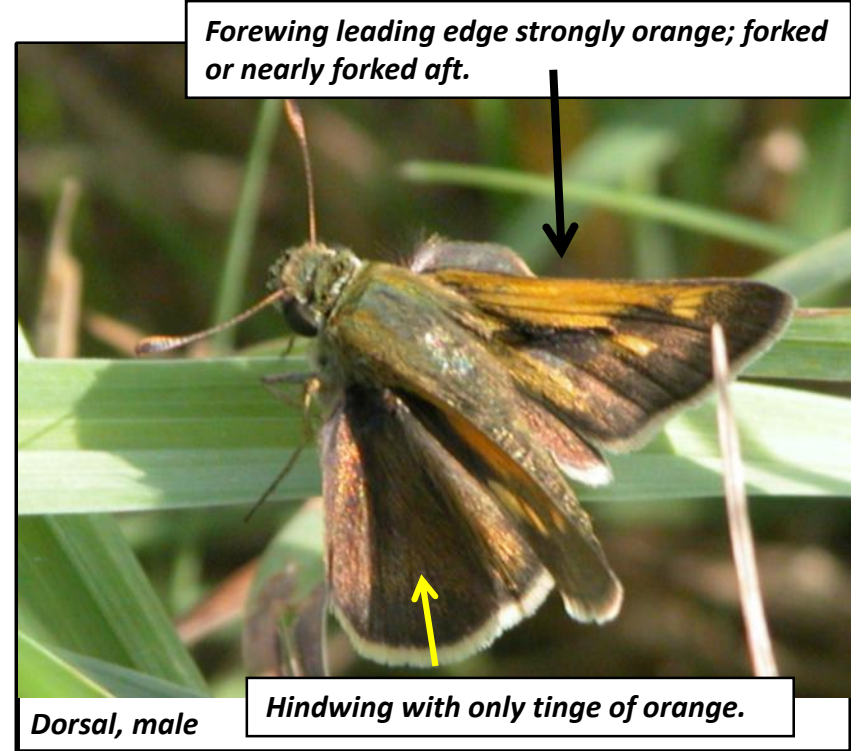
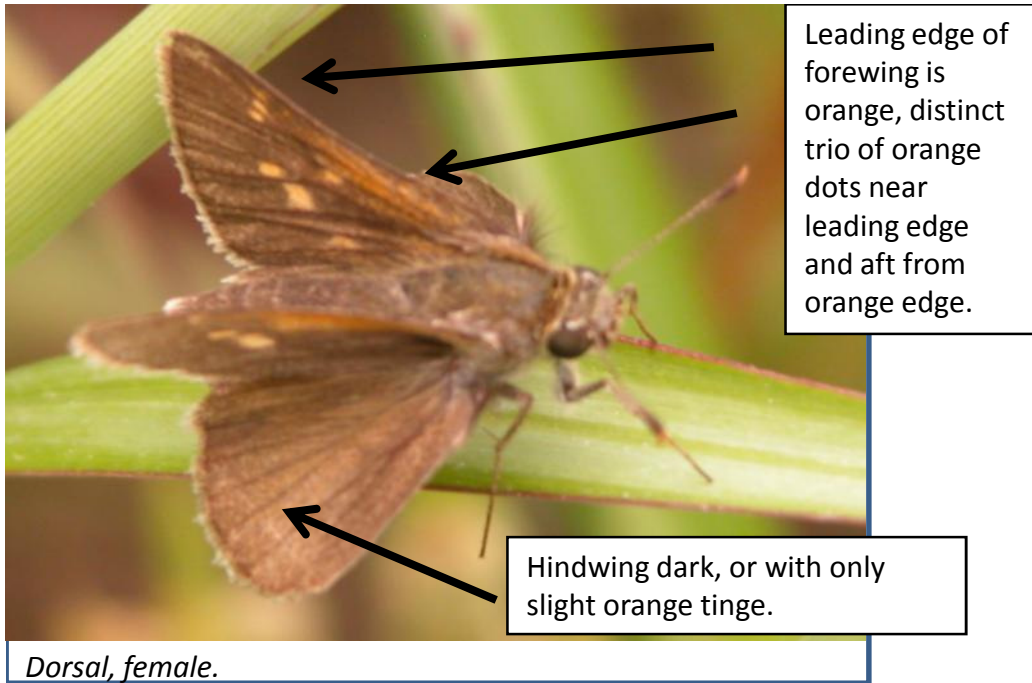


*Some females blackish, some orangish, but split string of light dots, center portion having dots more fore and more aft is typical.*

**Female, dorsal, dark form.**

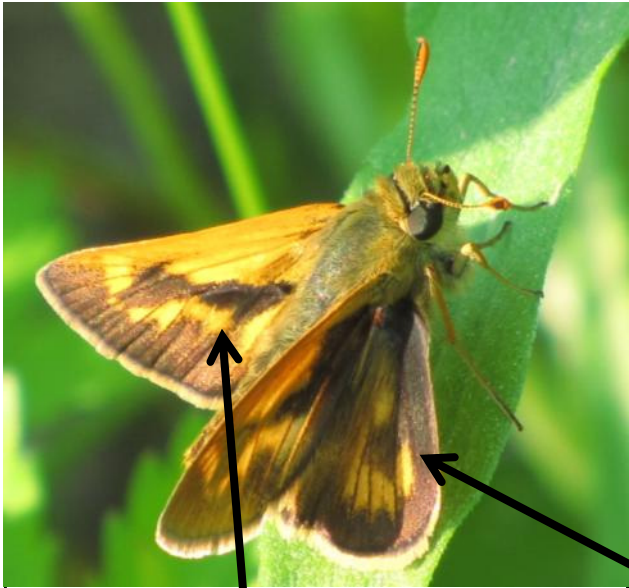
## Hobomok Skipper *Poanes hobomok*

Fairly common skipper of our fields, flies mostly in July. Most easily confused ventrally with the Peck's Skipper.



## Tawny-edged Skipper *Polites themistocles*

Common June – August in our fields.



**Dorsal, male**

Dorsally, both male and female have a long, connected black dash that cuts across forewing; forewing leading edge is orange; more so in male.

Perhaps the most distinctive characteristic, both above and below, is the light "comet" on the hind wing.



**Ventral, both sexes similar; this photo from Mass. Butterfly Atlas.**



**Dorsal, female**

**Long Dash Skipper *Polites mystic***

Flies mainly during June; often, although not always, in wetter fields.